

the

magazine



10 The new Titanium colour

18 Behind the scenes

26 iF Design Award 2021 - Orbit and Edge

46 Get connected with Smart Tune™

02

LIGHT•POINT



light

creating

10

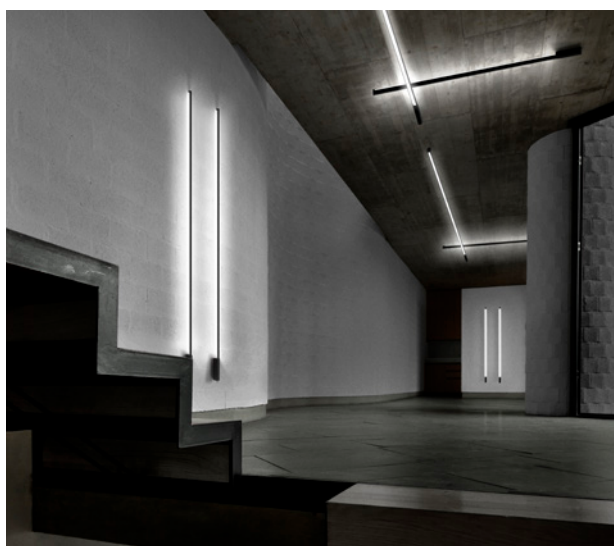
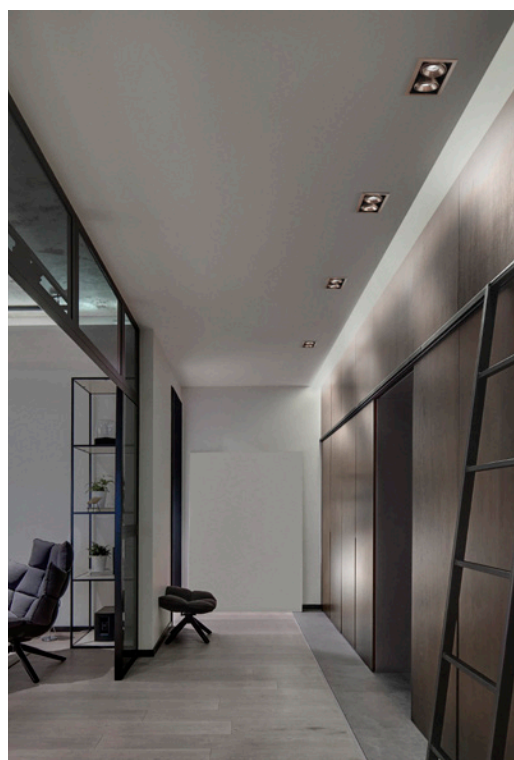
New colour / Titanium

Experience our extensive collection in the latest Titanium colour.

18

Behind the scenes

A passion for design underpins everything that we stand for.



26

iF award '21

A proud moment to celebrate two award-winning collections.

46

Get connected

Our newest SMART TUNE feature allows more light personalisation using a smartphone.

56

Design clusters

Creating a symphony of light with more lamps for your home.

We are delighted to share with you our latest LIGHT-POINT magazine. Among many exciting news, we hereby highlight a few.

SMART-TUNE - Powered by Casambi

Our newest pendant collections, AURA, EDGE, and ORBIT, have been integrated with CASAMBI – an intelligent standard for lighting control that can be operated using a smartphone.

Titanium

Experience our latest collection in Titanium. The combined colour, material and finish creates a depth that changes from light to dark, depending on the surroundings.

iF Design Awards 2021

Once again this year, we are proud iF Design Award winners. This prestigious, much-coveted design award is bestowed every year on the world's most trend-setting, innovative design solutions. We received this year's iF Design Award for two collections: ORBIT and EDGE.

We hope you will enjoy our new magazine!

Ronni Gol / Founder & CEO

Ronni



Gol



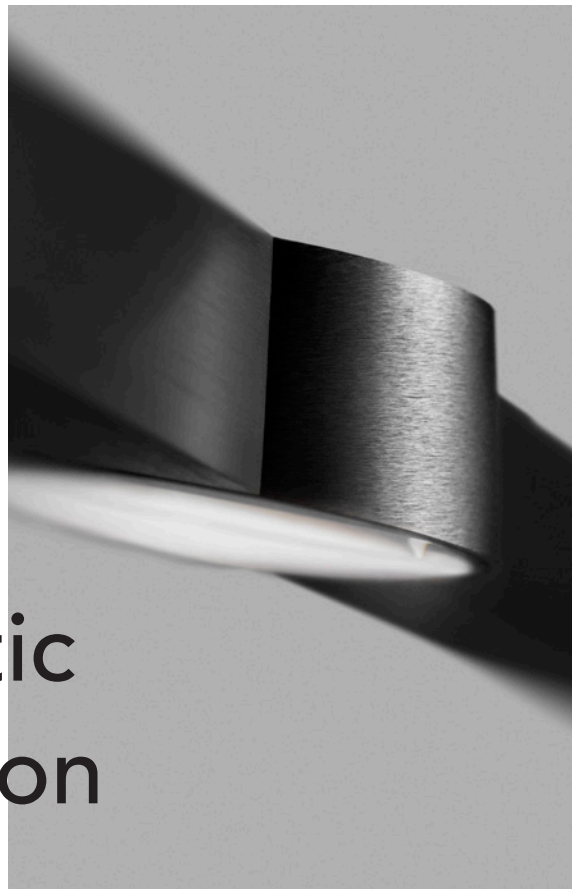
SWITCH TUNE™



Optic Linear is a ceiling pendant that embodies credo "Form follows function". Each faceted spot is seamlessly sculpted into the linear profile adding an aesthetic dimension. The optic glass provides a glare-free light and provides maximum light where needed.

The surprise is the consistent spread of light on the surface as opposed to circles of light that would generally be expected from spot fixtures.

the optic collection



OPTIC LINEAR /
by Nital Patel

COLLECTION /
Pendant & Ceiling



LEFT PAGE Optic Out - Titanium
by Nital Patel

RIGHT PAGE Soho - Titanium
by Ronni Gol



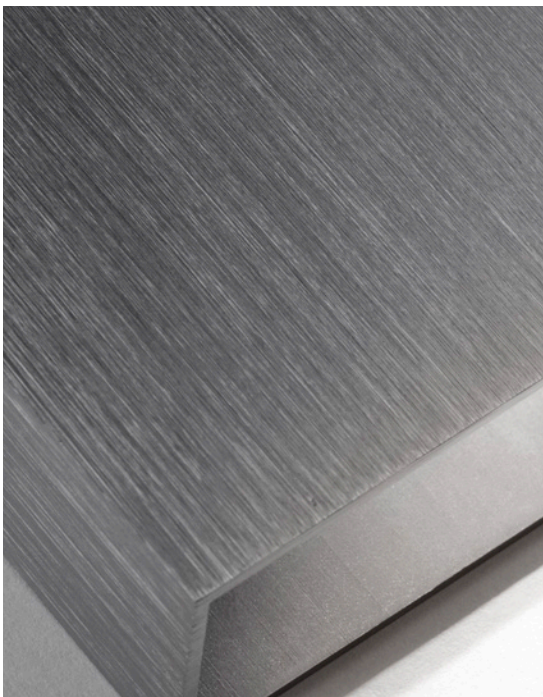


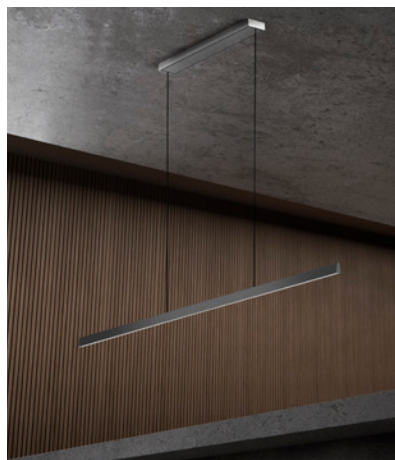
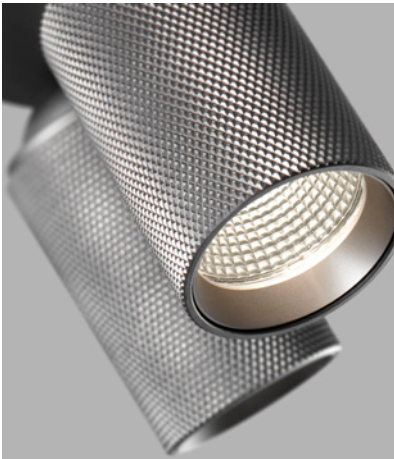
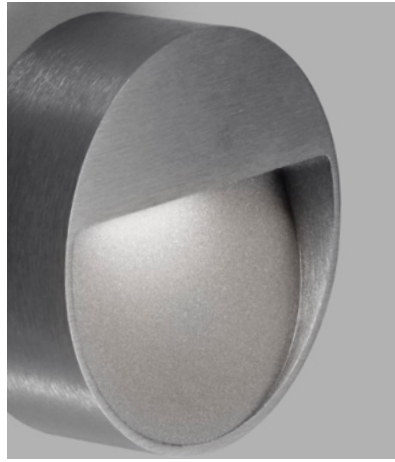
ABOVE Ghost - Titanium
by Ronni Gol

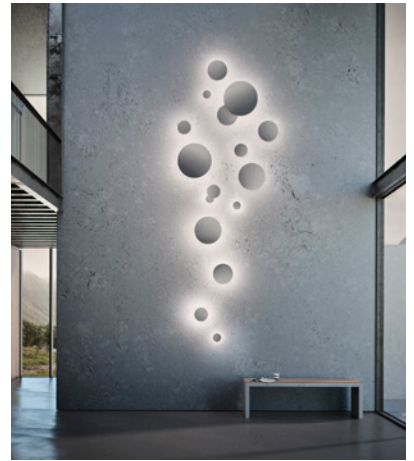
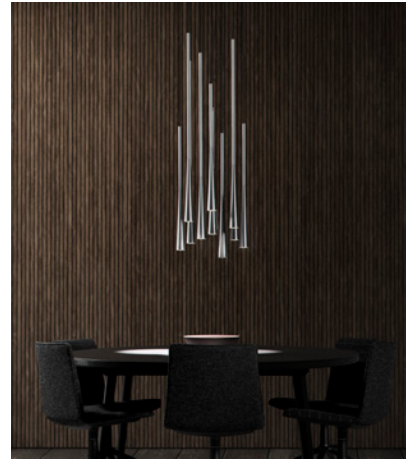
experience our latest collection in Titanium

The collection is inspired by the Nordic expression, which with its simple style and natural choice of materials, leads the mind towards the nature around us. Yet, it is entirely its own. At once extremely discreet and inevitably conspicuous. And with a colour choice that has a special depth that changes from light to dark, depending on the surroundings.

This is partly due to the brushed aluminium surface, reflecting light and adding warmth and elegance to the lamps. This makes the collection incredibly suitable in many homes, where it brings the natural, Nordic style while at the same time adding a beautiful touch of exclusivity. And then it is not least a much-needed alternative to the classic black lamps, which can give the decor a more harmonic look.







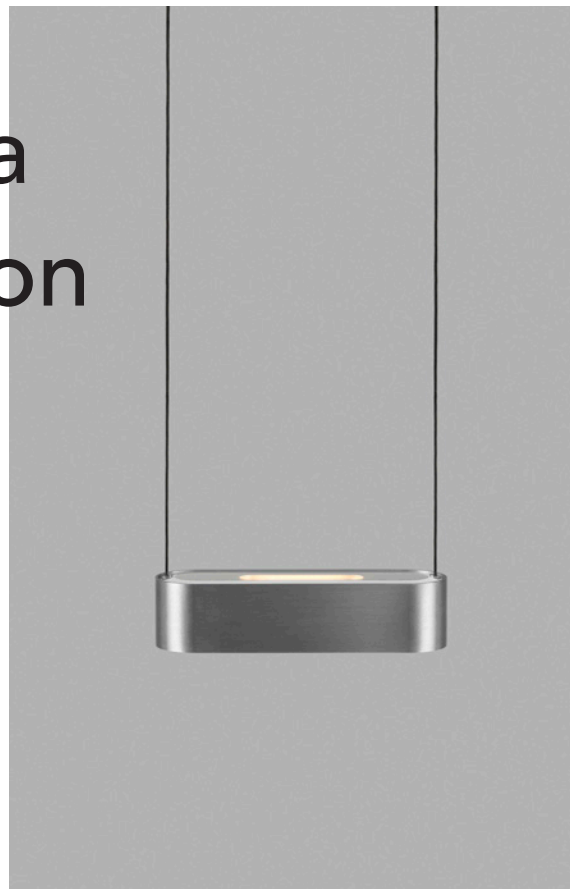




The Aura pendants are the newest line extension to the series. Its design is based on the principles of the international architectural style, combining clean lines with technical precision.

The pendants use a deep light source enclosure and is combined with an optic glass. Both the wall and pendants boast with having the warm LED light source completely out of peripheral vision, making it a comforting glare-free ambient mood light.

the aura collection



AURA PENDANT /
by Nital Patel

COLLECTION /
Pendant & Wall

LEFT PAGE Aura - Rose Gold
by Nital Patel

LEFT PAGE Aura - White
by Nital Patel

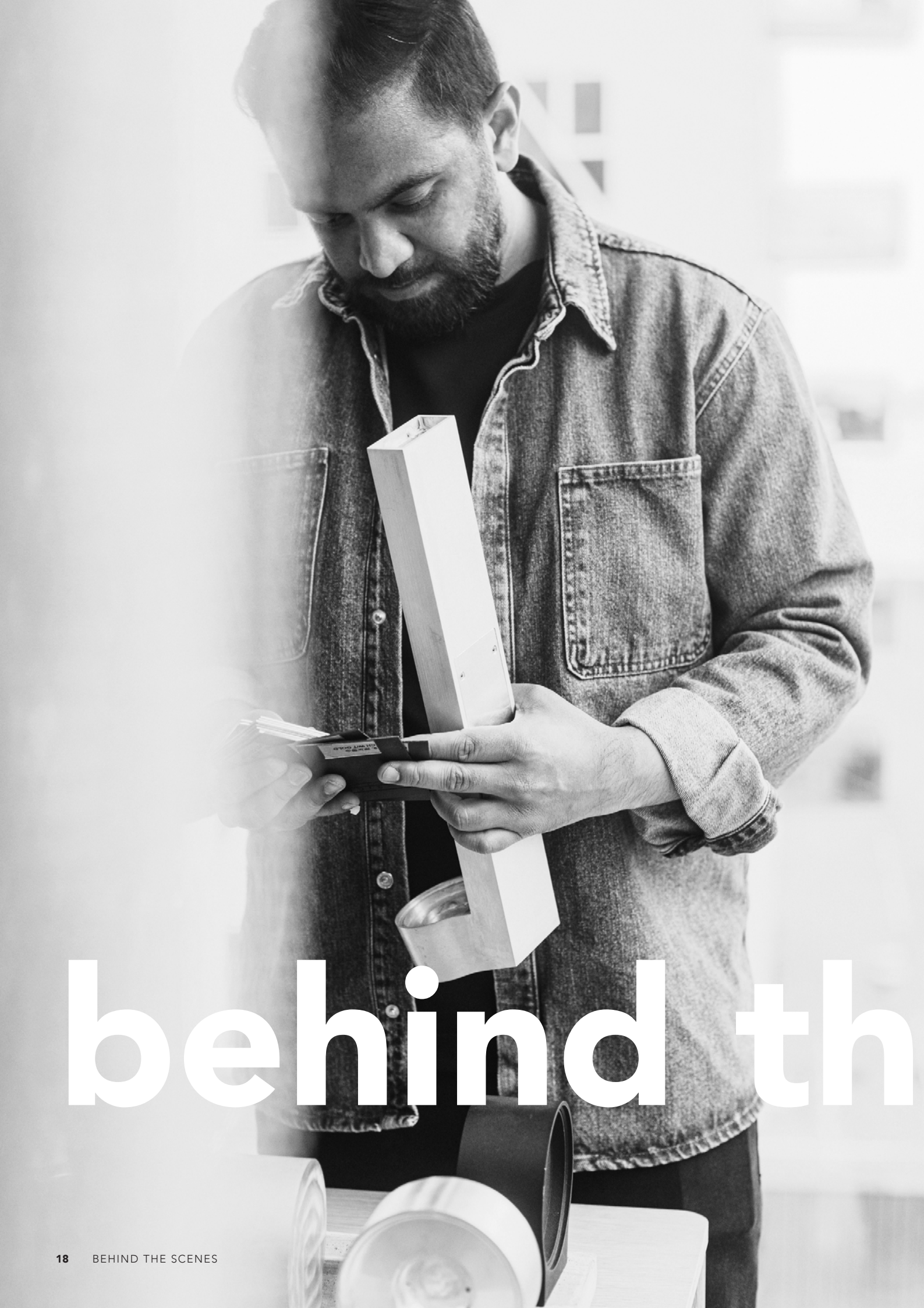
RIGHT PAGE Aura - Titanium
by Nital Patel





SWITCH TUNE™

AURA: NEW TITANIUM COLOUR



behind th

It always starts with an idea. Then comes a sketch which gives an immediate sense of the concept and offers a unique opportunity to adapt and adjust the dimensions, shapes swiftly, and, most importantly, the function.

The sketches shape the ideas, but it is only until we model the sketches that we bring the ideas to life.

So, we 3D print all our good ideas in-house. Uniquely, this enables us to assess the final result, evaluating the lamp before putting it into production. It also helps ensure that every solution is thought through, down to the tiniest detail. Because at LIGHT-POINT a lamp isn't just a lamp. Here, we think through the entire process—every single time.

Throughout the entire process, we always do our utmost to achieve the highest possible quality – even including the fact that our products are designed for disassembly, meaning that they can be broken down at the end of their life for recycling.

Responsible for LIGHT-POINT's designs, a team of dedicated designers headed by our founder Ronni Gol and our Head of Design, Nital Patel. With their huge love of design and an equal degree of experience, they confidently manage both the development of new collections and the improvements and refinement of existing ones. Our philosophy is that there is always room for improvement. Nothing is perfect forever. But our designers generally get pretty close.

e scenes



LEFT PAGE Compact - Titanium
by Ronni Gol

RIGHT PAGE Curve - Titanium
by Ronni Gol



SWITCH TUNE™

CURVE: NEW TITANIUM COLOUR 21



we're creating light





LEFT PAGE Zero Wall - Titanium
by Ronni Gol

RIGHT PAGE Zero Pendant - Titanium
by Ronni Gol



SWITCH TUNE™
POWERED BY CASAMBI



LEFT PAGE Edge Round - Titanium
by Nital Patel

iF Design Awards 2021

Once again this year, LIGHT-POINT is a proud IF Design Award winner. This prestigious, much-coveted design award is bestowed every year on the world's most trend-setting, innovative design solutions. It is also an outstanding recognition of LIGHT-POINT's achievements – not only when it comes to creating light, but also innovation.

We received this year's IF Design Award for two collections: ORBIT and EDGE. They won the award for Best Product in the Lighting category.

ORBIT

The idea of ORBIT was to create an innovative, high-end collection based on the concept of 'Form Follows Function' and to come up with a new take on the familiar LED lamp, right down to the smallest detail.

The basis of the design is a shape that guarantees optimum function. There are no traditional plastic LED reflectors. Instead, the design features optical glass, which ensures optimum lighting without dazzling or irritating our eyes. The glass also helps distribute the light elegantly – further, more widely, and, in particular, more gently.

ORBIT is an extensive collection covering wall lamps, floor lamps, pendants, and outdoor garden bollards. All made of top-quality aluminium and available in Rose Gold, Titanium, Black and White Models in Black and White are also suitable for outdoor use.

EDGE

EDGE results from our desire to design a premium collection of pendants that embodies the architectural international design style. The goal was a lamp that could distribute perfect light while looking both beautiful and sculptural.

The collection has several features, elegantly underscored by its conical shape. So, the widest side is designed to provide excellent, functional light, whereas the narrower side provides more ambient lighting. EDGE's iconic shape lends a lovely aesthetic touch to any ceiling or wall, making an interior more cutting edge.

The collection features both circular and linear lamps – all made of top-quality aluminium, and available in Rose Gold and our latest Titanium.



DESIGN
AWARD
2021

SWITCH TUNE™
POWERED BY CASAMBI





the edge collection

EDGE is our newest state-of-the-art pendant collection that can be operated using a smartphone or by a touchless sensor to turn the light on/off, adjust the light intensity and change the colour temperature.



EDGE LINEAR /
by Nital Patel

COLLECTION /
Pendant Linear & Round

nordic
minimalism



the edge collection



EDGE ROUND /
by Nital Patel

COLLECTION /
Pendant Round & Linear

The conical shape adds an aesthetic dimension to any ceiling. The design embodies the idiom “form follows function”, whereby the widest part of the tapered edge provides maximum light on any working area, whilst its narrowest tapered edge, an ambient room light.





the orbit collection

ORBIT WALL /
by Nital Patel & Ronni Gol

COLLECTION /
Wall, Pendant & Floor

The ORBIT collection consists of indoor and outdoor lamps that work optically, spreading light further and softer.

a warm
welcome



SWITCH TUNE™
POWERED BY CASAMBI

ABOVE Orbit Pendant - Rose Gold
by Nital Patel & Ronni Gol



Orbit Pendant is an indoor ceiling suspension lamp that works optically, spreading light further, wider, and more softly. The optic glass lens provides a glare-free light, eliminating annoyance to the eyes while providing maximum light where needed.

The pendants can be operated using a smartphone or by a touchless sensor to turn the light on/off, adjust the light intensity and change the colour temperature.

orbit pendant

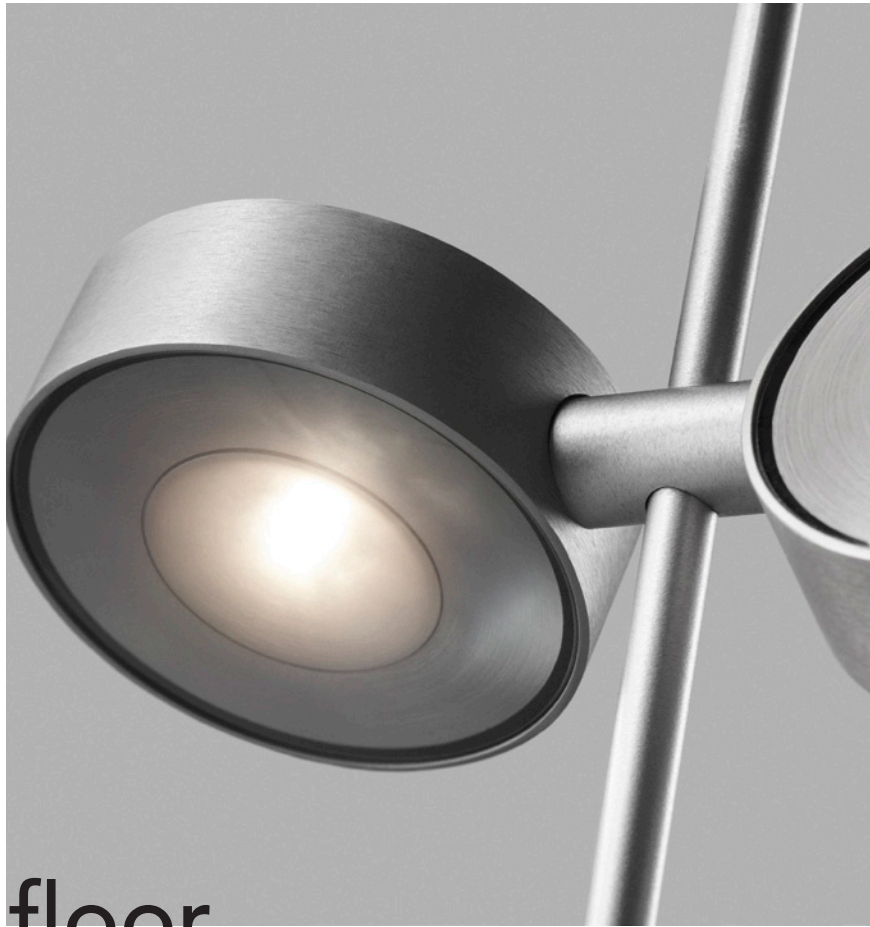


ORBIT PENDANT /
by Nital Patel & Ronni Gol

COLLECTION /
Pendant, Wall & Floor



SWITCH TUNE™
POWERED BY CASAMBI



orbit floor

The Orbit Floor lamp can be operated by the touch-less sensor to turn the light on/off and adjust the light intensity. Both spots can be control independently from one another, allowing users to shape their light.

ORBIT FLOOR /
by Nital Patel & Ronni Gol

COLLECTION /
Pendant, Wall & Floor





LEFT Spirit Floor - Rose Gold
by Ronni Gol

RIGHT Orbit Floor - Rose Gold
by Nital Patel & Ronni Gol

reading in the dark





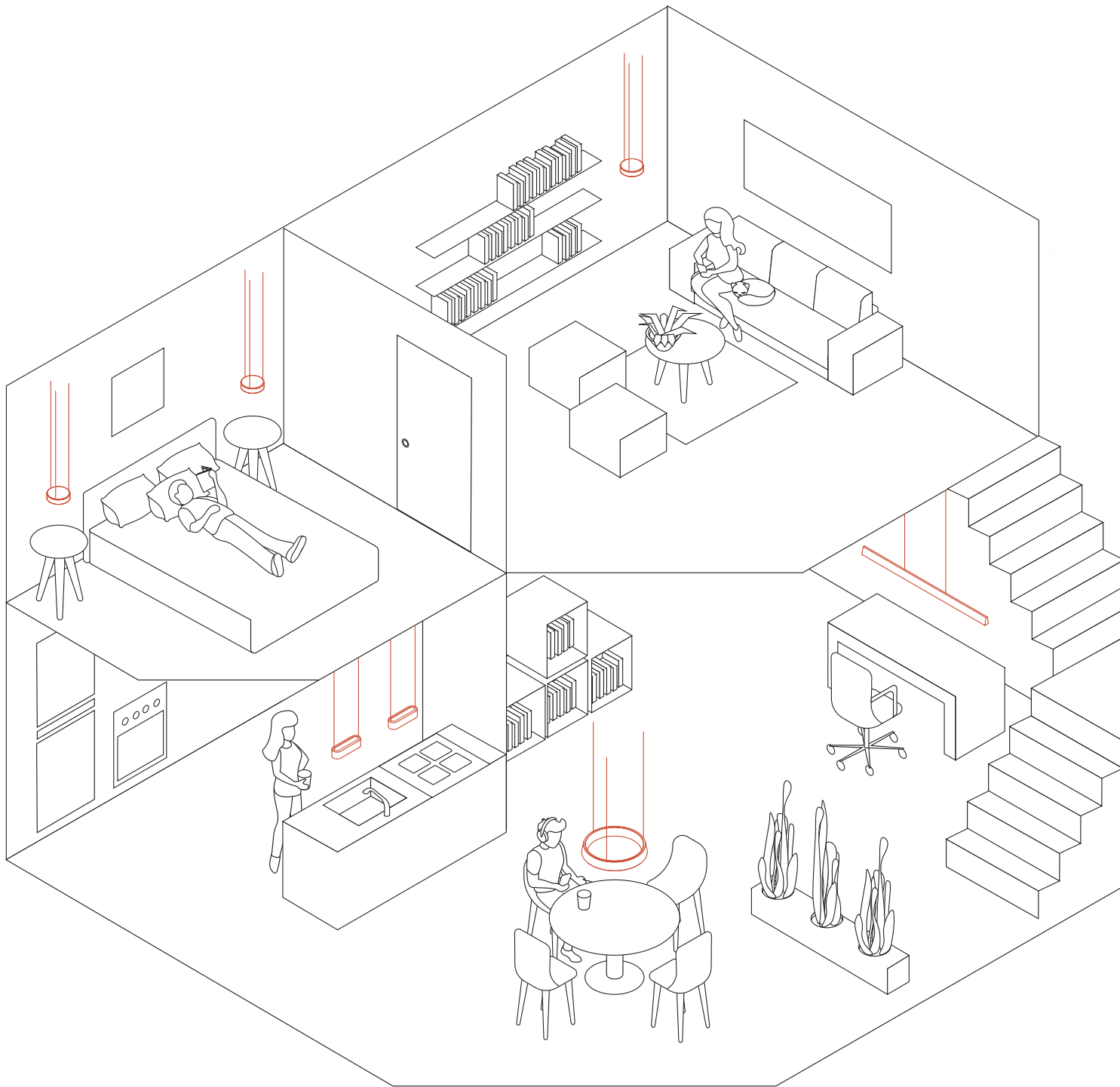
SPIRIT: NEW TITANIUM COLOUR



LEFT PAGE Spirit Pendant - Titanium
by Ronni Gol

RIGHT PAGE Spirit Table - Titanium
by Ronni Gol







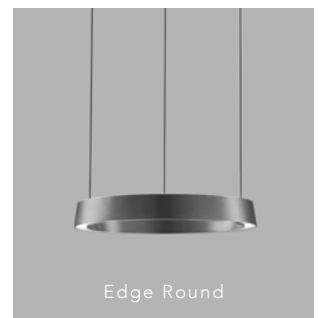
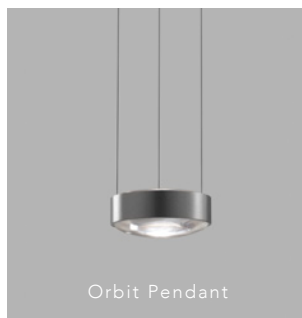
get connected

Our latest pendant collections, AURA, EDGE, and ORBIT, have made it even easier to create the perfect atmosphere and lighting—no matter where you are. We have future-proofed our most popular collections by integrating CASAMBI – an intelligent standard for lighting control that provides the unique option of playing with light. We call this SMART TUNE™.

The common feature between these lamps is that you can operate them with ease and simplicity

using the CASAMBI App on your smartphone. You can configure, personalise and control each lamp through the simple to use interface.

The AURA, EDGE and ORBIT pendants provide a plug and play experience with its integrated CASAMBI module fitted in the ceiling base.





LEFT PAGE Sirius - Titanium
by Ronni Gol

RIGHT PAGE Shadow
by Ronni Gol



SWITCH TUNE™





Raw is an attitude of refined simplicity and technical precision that has become synonymous of LIGHT-POINT's design style.

The Raw spot lamps feature the brand's newest signature, cross-knurled pattern that is machined into solid aluminum, giving it a contemporary, yet elegant aesthetic at the same time. The diamond facets in the knurling textured have been softened to enrich the depth of the Rose Gold, Titanium or Carbon Black colours.

the raw collection



RAW /
by Nital Patel

COLLECTION /
Downlight





LEFT PAGE Orbit Pendant - Titanium
by Nital Patel & Ronni Gol

RIGHT PAGE Solo - Titanium
by Ronni Gol



VANTAGE is a state-of-the-art LED spot lamp that works optically, spreading light further and softer. The conical shapes add an aesthetic dimension to any ceiling or wall.

The design is created with one or two light sources, Vantage 1 and Vantage 2, available in two sizes where the largest version is marked with a +. Vantage is available in the colours White, Black, Rose Gold and Titanium.

the vantage collection



VANTAGE /
by Nital Patel

COLLECTION /
Ceiling





LEFT PAGE Drop Pendant - Rose Gold
by Ronni Gol

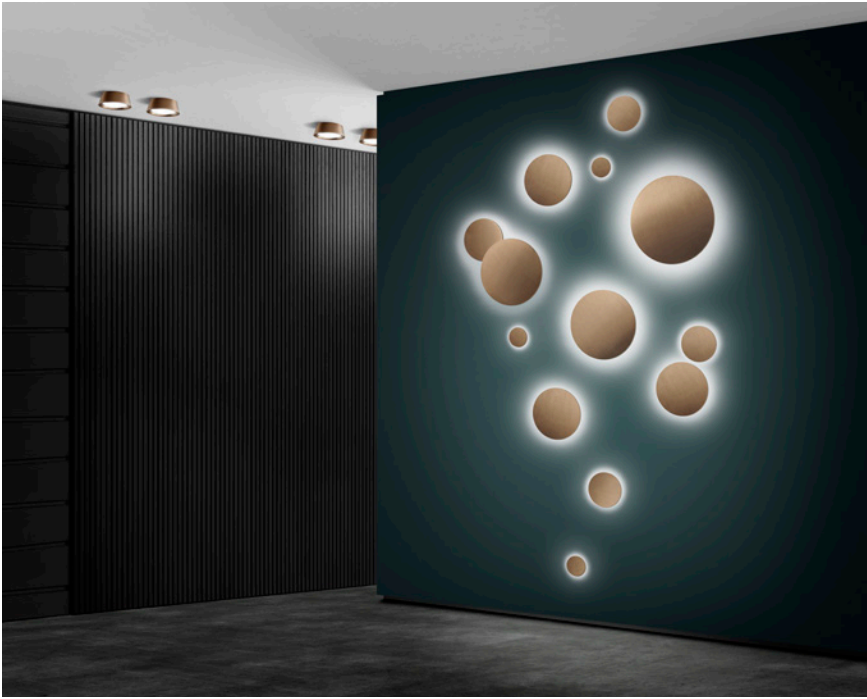
symphony of lights

A lamp is much more than just a source of light. It's also a neat way of adding the finishing touch to any interior. The right lighting not only illuminates an entire room but also creates focus on selected elements – be it a corner, an item of furniture, or a central gathering point. It can also provide both depth, tranquillity, and a sense of space. But it can also do much more than that.

LIGHT-POINT's pendant lamps are designed to create the perfect light. Not only alone but also as a cluster. It's when you group them, one by one, in large or small sets, that the uniqueness emerges.

The lamps astute balance of form and function and other interior design choices can lend any home a touch of artistry.

Enhance you're décor and enjoy the impression made by clusters of pendant lamps. On walls, above tables, in ceilings, and corners. Discover how expressive lighting can become an almost sculptural element of an interior, at once highly functional and surprisingly aesthetic—an artistic, cultural statement.





LEFT PAGE Soho - Rose Gold
by Ronni Gol

LEFT PAGE Ghost 2 - Titanium
by Ronni Gol

LEFT PAGE Stick - Gold
by Ronni Gol

RIGHT PAGE Soho - Black
by Ronni Gol

RIGHT PAGE Drop - Rose Gold
by Ronni Gol

LIGHT·POINT[®]
C O P E N H A G E N

info@light-point.com

www.light-point.com

#lightpointcom

LIGHT-POINT is a registered trademark
of NORDIC LIVING GROUP.

© LIGHT-POINT 2021. All rights reserved.

LIGHT-POINT believes that all information in this publication is correct at the
time of printing, but is not responsible for accuracy of information published.

All information is subject to change without notice.

ART NO. 5043

LIGHT-POINT.COM

FRONT PAGE DROP PENDANT

BACK PAGE EDGE ROUND

